

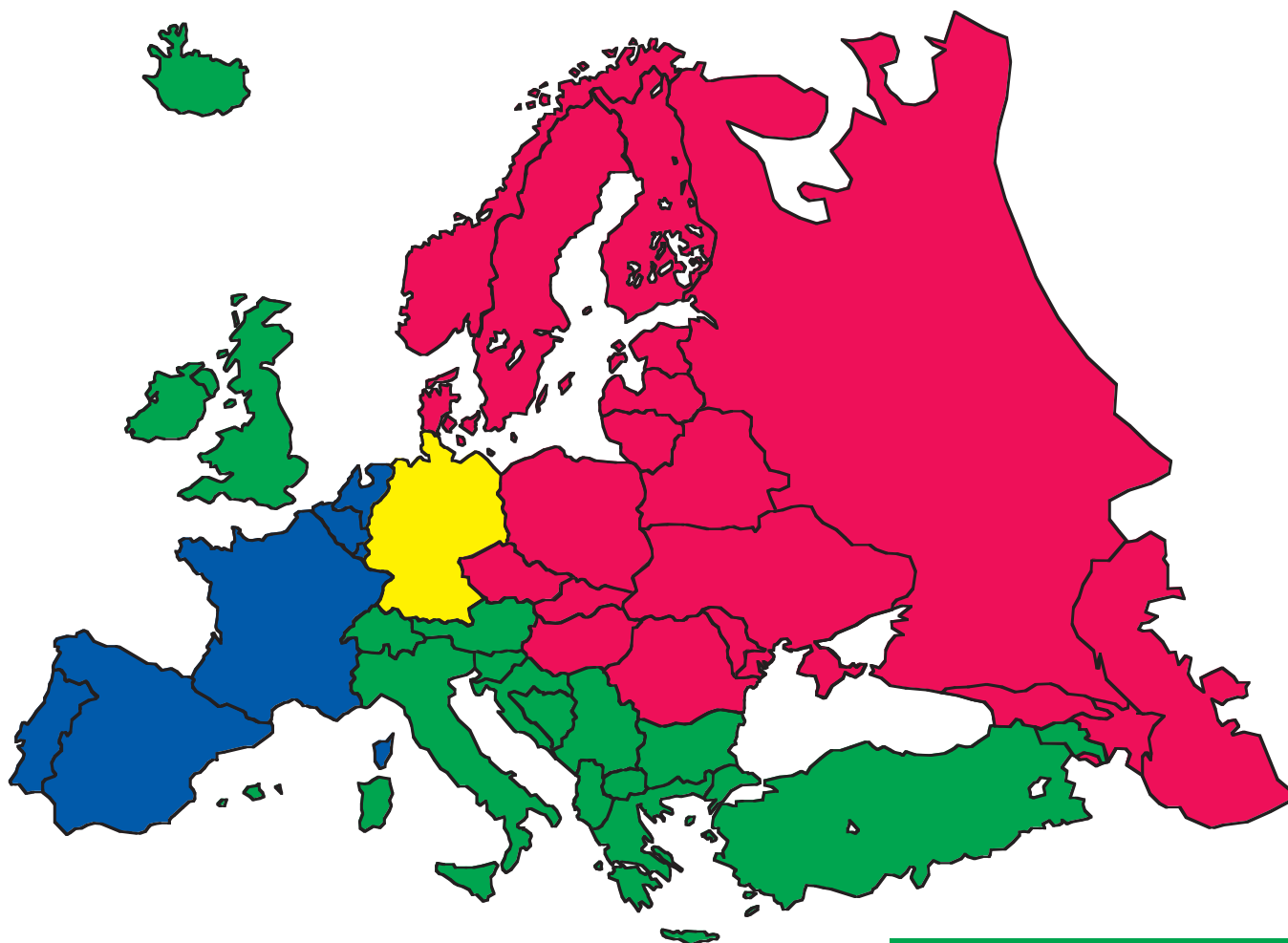
Shuttering



*So that what belongs together
stays together.*

for better solutions...

H
BAU
TECHNIK



H-BAU Technik GmbH

Am Güterbahnhof 20
D-79771 Klettgau
Deutschland
Tel. +49 (0) 77 42 / 92 15-20
Fax +49 (0) 77 42 / 92 15-90
eMail: export.klettgau@h-bau.de

Production east:
Brandenburger Straße
D-14641 Wachow
Deutschland
Tel. +49 (0) 332 92 / 775-20
Fax +49 (0) 332 92 / 775-90
eMail: export.berlin@h-bau.de

Paul Rieger

Tel. +49 (0) 7742 / 9215-21
Fax +49 (0) 7742 / 9215-93
Mobil +49 (0) 171 / 86472 61
eMail: paulrieger@h-bau.de

Klaus Langer

Tel. +49 (0) 26 64 / 58 54-41
Fax +49 (0) 26 64 / 58 54-42
Mobil +49 (0) 171 / 86472 60
eMail: k.langer.monschau@t-online.de

Rudolf Till

Tel. +49 (0) 332 39 / 775-24
Fax +49 (0) 332 39 / 775-90
Mobil +49 (0) 172 / 99370 50
eMail: rudi.till@t-online.de



Shuttering

So that what belongs together stays together.

Contents

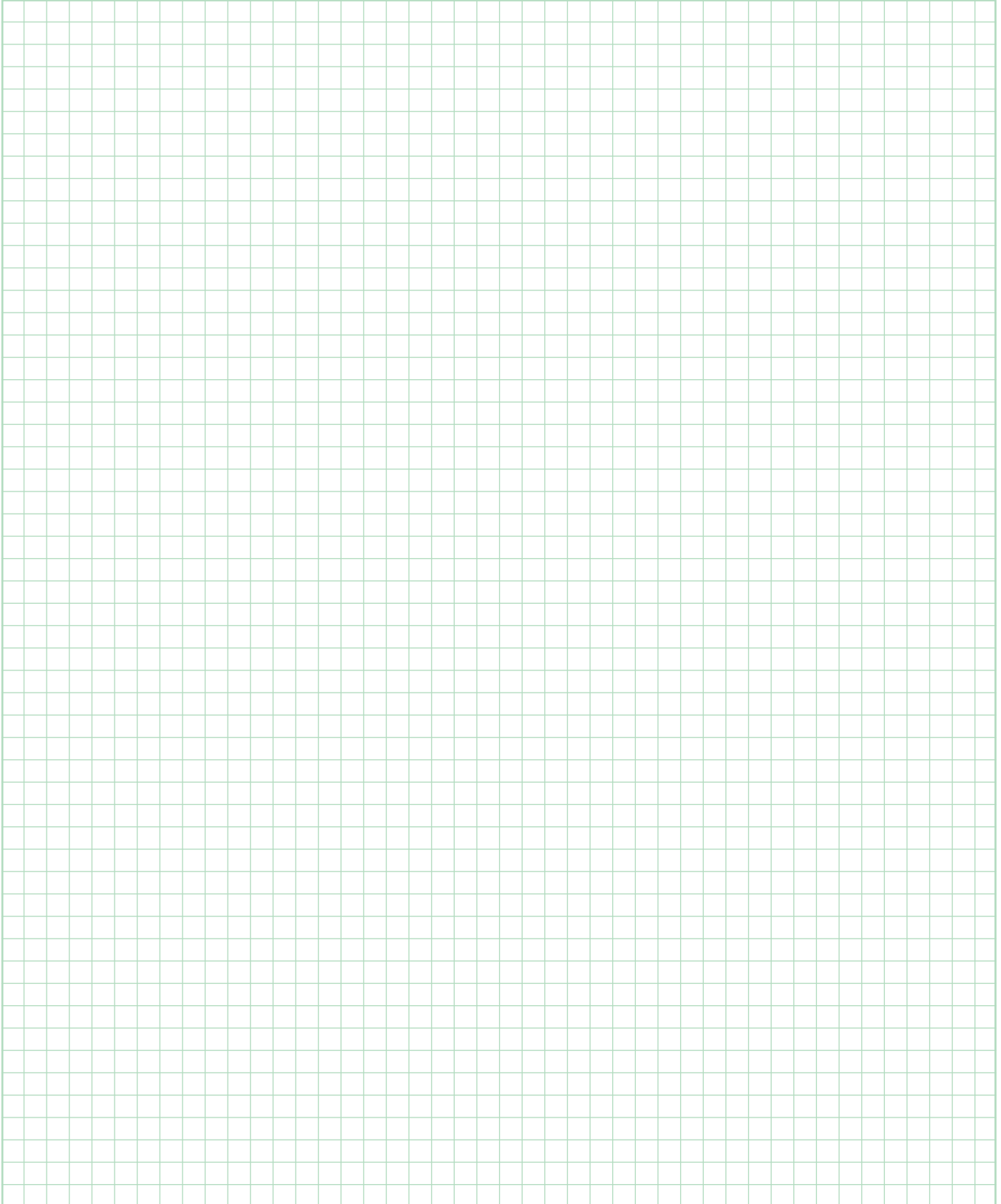
RAPIDOBAT®

RAPIDOBAT®	The branded shuttering tube from H-BAU Technik	1
	RAPIDOBAT®-KARAT	2
	RAPIDOBAT® accessories	4
	RAPIDOBAT®-SpeÖial – More than just squaring the circle	5
	Erection	7
	Requirement specification text	8
RAPIDOBORD® WM	Face shuttering for continuous mat reinforcement	9
	Requirement specification text	10
UNIBORD	Face shuttering for continuous mat reinforcement	11
WARMBORD	The insulating shuttering for the warm house	12
SCHALBORD	High stability with minimum footprint	13
Requirement spec. texts	Unibord	14
	Warmbord	15
	Schalbord	16



SHUTTERING

Notes

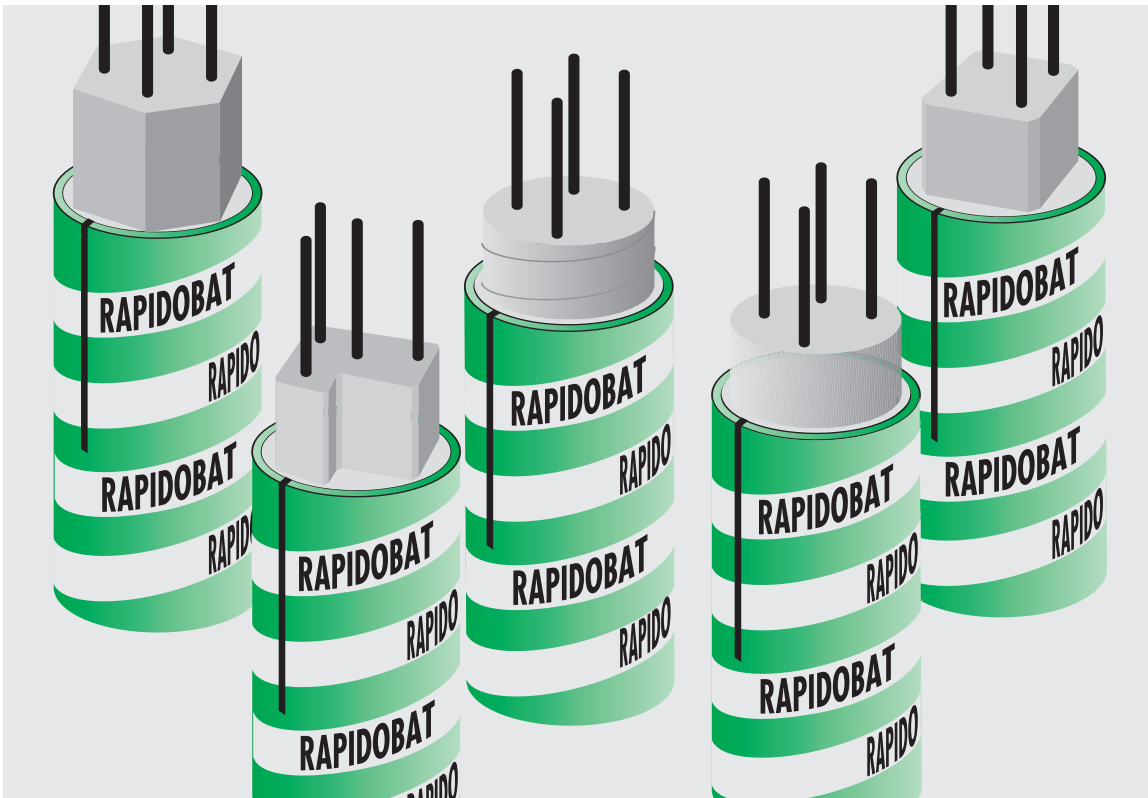


RAPIDOBAT®

The branded shuttering tube from H-BAU Technik

RAPIDOBAT®

RAPIDOBAT®



RAPIDOBAT®

The branded shuttering tube from H-BAU Technik

Impressive advantages at a glance:

- Quick and easy. Just fit and secure RAPIDOBAT® shuttering tube and concreting can begin. Only one concreting date for a large number of supports.
- Round exterior with internal inserts for
 - ... textures
 - ... rectangular supports
 - ... hexagonal supports
 - ... octagonal supports
 - ... almost all special shapes
- Support heads
 - In different shapes matched to the support.
- Capitals and bases
 - For that special ambience.
- Support holder
 - The fixing system is as easy to use as the shuttering tube itself.
- Removal of shuttering in seconds
 - The rip cord is incorporated into the shuttering tube and acts like a zip fastener.
 - It couldn't be any quicker!
- Environmentally friendly
 - No cleaning and return of shuttering required
 - No shuttering oil needed
 - Rust-free
 - No problems with disposal

RAPIDOBAT®-KARAT

With **RAPIDOBAT®-KARAT**, the new shuttering tube from H-BAU Technik, you can lend even more weight to the splendid appearance of reinforced concrete supports.

Thanks to a specially developed internal coating, which is applied over the whole surface, with **RAPIDOBAT®-KARAT** the surfaces of your supports are absolutely smooth. Absolutely smooth means no previously unavoidable horizontal and vertical seams! Two rip cords are incorporated for easier removal of the shuttering.

RAPIDOBAT®-KARAT is thus ideally suitable for reinforced concrete supports where the utmost importance is placed on the visual quality of the concrete.

RAPIDOBAT®-KARAT is obtainable in all sizes from Ø 200 mm to Ø 1200 mm and up to a length of 8 metres. Other lengths and sizes on request.



The shuttering



The product

RAPIDOBAT®

The branded shuttering tube from H-BAU Technik

RAPIDOBAT®-KARAT - tubes round with an absolutely smooth finish.

RAPIDOBAT®-KARAT

Oberflächenausführung	Innen- durchmesser mm	Aussen- durchmesser mm	max. Schalhöhe m	Gewicht kg/m	Beton- bedarf m ³ /m
KARAT					
Artikelnummer					
6510150000	150	159	7,00	2,39	0,018
6510200000	200	209	7,00	3,16	0,031
6510240000	240	250	7,00	3,81	0,045
6510250000	250	260	7,00	3,93	0,049
6510300000	300	310	7,00	4,70	0,071
6510350000	350	360	7,00	5,47	0,096
6510360000	360	370	7,00	5,67	0,102
6510400000	400	412	7,00	6,24	0,126
6510435000	435	447	7,00	6,78	0,149
6510450000	450	463	7,00	7,01	0,159
6510500000	500	514	7,00	10,15	0,196
6510560000	560	574	6,00	11,34	0,246
6510600000	600	616	6,00	12,15	0,283
6510650000	650	667	6,00	16,20	0,332
6510700000	700	719	6,00	17,44	0,385
6510750000	750	770	6,00	19,89	0,441
6510800000	800	821	6,00	24,95	0,503
6510900000	900	924	6,00	30,94	0,636

RAPIDOBAT®



RAPIDOBAT®

Erect • Concrete • Pull the rip cord • Finished

RAPIDOBAT® ROUND and ANGULAR – the standard from H-BAU Technik

Beautiful supports, shuttered quickly and reliably

RAPIDOBAT® Round

Surface design				Inside	Outside	max.	Weight		Concrete
Spiral		Smooth		diameter	diameter	shutt.height	Spiral	Smooth	requirement
Item No.	Type	Item No.	Type	mm	mm	mm	kg/m	kg/m	m ³ /m
601015000	RB/150	611015000	RGB/150	150	160	12,30	1,71	1,90	0,018
601020000	RB/200	611020000	RGB/200	200	210	10,25	2,26	2,52	0,031
601025000	RB/250	611025000	RBZ/250	250	260	10,25	2,81	3,13	0,049
601030000	RB/300	611030000	RBZ/300	300	310	10,25	3,36	3,74	0,071
601035000	RB/350	611035000	RBZ/350	350	360	8,79	3,91	4,36	0,096
601036000	RB/360	611036000	RBZ/360	360	370	8,79	4,05	4,62	0,102
601040000	RB/400	611040000	RBZ/400	400	415	7,69	4,46	4,97	0,126
601043500	RB/435	611043500	RBZ/435	435	450	7,00	4,84	5,39	0,149
601045000	RB/450	611045000	RBZ/450	450	465	6,50	5,01	5,58	0,159
601050000	RB/500	611050000	RBZ/500	500	515	7,30	7,25	7,89	0,196
601056000	RB/560	611056000	RBZ/560	560	575	6,80	8,11	8,81	0,246
601060000	RB/600	611060000	RBZ/600	600	620	6,15	8,68	9,44	0,283
601065000	RB/650	611065000	RBZ/650	650	670	6,00	11,57	12,40	0,332
601070000	RB/700	611070000	RBZ/700	700	720	7,03	12,46	13,35	0,385
601080000	RB/800	611080000	RBZ/800	800	820	7,69	17,82	18,84	0,503
601090000	RB/900	611090000	RBZ/900	900	924	7,70	22,11	23,24	0,636
601100000	RB/1000	611100000	RBZ/1000	1000	1026	7,65	26,75	29,42	0,785
601120000	RB/1200	611120000	RBZ/1200	1200	1250	7,50	33,78	35,30	1,131

Spiral: with slight spiral contour; Smooth: smooth surface due to foil insert.

RAPIDOBAT® Square and Rectangular

Surface design				Inside diameter mm	Outside diameter		Weight		Concrete requirement m ³ /m
Cardboard ^①		Hardboard ^②			① mm	②	kg/m	kg/m	
Item No.	Type	Item No.	Type						
6512002000	KB/2020	6412002000	HB/2020	200 x 200	250	300	3,50	6,85	0,040
6512402400	KB/2424	6412402400	HB/2424	240 x 240	360	350	4,00	7,25	0,058
6512502500	KB/2525	6412502500	HB/2525	250 x 250	370	350	4,50	7,47	0,063
6511300300	KB/3030	6413003000	HB/3030	300 x 300	400	435	5,70	9,51	0,090
6513503500	KB/3535	6413503500	HB/3535	350 x 350	450	500	6,50	14,10	0,123
6514004000	KB/4040	6414004000	HB/4040	400 x 400	560	600	8,50	17,18	0,160
6515005000	KB/5050			500 x 500	800		10,50		0,250
6512002500	KB/2025	6412002500	HB/2025	200 x 250	350	350	4,00	8,47	0,050
6512003000	KB/2030	6412003000	HB/2030	200 x 300	400	400	5,00	9,73	0,060
6512003500	KB/2035	6412003500	HB/2035	200 x 350	450	450	6,50	9,83	0,070
6512004000	KB/2040	6412004000	HB/2040	200 x 400	500	500	7,00	13,91	0,080
6512503000	KB/2530	6412053000	HB/2530	250 x 300	400	400	5,70	10,00	0,075
6512503500	KB/2535	6412053500	HB/2535	250 x 350	450	450	6,50	11,10	0,088
6512504000	KB/2540	6412054000	HB/2540	250 x 400	500	500	7,50	14,23	0,100
6513003500	KB/3035	6413003500	HB/3035	300 x 350	500	500	7,50	13,71	0,105

KB/2020 to KB/5050 and HB/2020 to HB/4040 are available in lengths up to 5 m.

KB/2025 to KB/3035 and HB/2025 to HB/3035 are available in stock lengths of 3 m and 4 m.

Cardboard: slightly uneven surface due to cardboard insert.

Hardboard: smooth surface due to hardboard insert. Special dimensions on request.

RAPIDOBAT® - accessories

Erect • Concrete • Pull the rip cord • Finished

RAPIDOBAT® ACCESSORIES

Foil tube			
As protection against moisture.			
Item No.	For dimensions (mm)	Packing unit m/roll	Weight kg/m
37000400	150 - 400	250	0,18
37000700	435 - 600	250	0,23

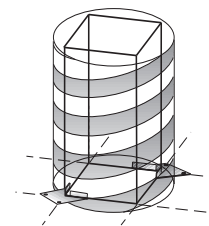
Adhesive tape			
For reinforcement, for half shells and small repairs.			
Item No.	Running m on roll	Purpose	Weight kg/roll
62900050	50	Reinforcement	0,65
62900150	50	Half shells	0,78

RAPIDO-FIX			
Fixing elements for alignment of Rapidobat® Square and Rapidobat® Rectangular.			
Item No.	For dimensions (mm)	Packing unit	Weight kg/each
67062000	all	2	0,85

RAPIDO-Clamp type P		
Clamping belt with 3 plastic strip loops for anchoring, suitable for all dimensions.		
Item No.	For dimensions in mm Ø	Weight kg/each
67000000	100 - 1200	0,18

RAPIDO-Clamp type M		
Adjustable steel sleeve with 2 Dywidag anchor rods for anchoring.		
Item No.	For dimensions in mm Ø	Weight kg/each
67100250	250 - 400	2,95
67100435	435 - 650	4,30

RAPIDO-Clamp type R		
Steel tube sleeve with Velcro fastener and 2 Dywidag anchor rods for anchoring		
Item No.	For dimensions in mm Ø	Weight kg/each
67120150	150 - 200	0,95
67120240	240 - 300	1,17
67120350	300 - 400	1,39
67120435	435 - 500	1,95
67120560	560 - 600	2,24



RAPIDOBAT® - Special

Erect • Concrete • Pull the rip cord • Finished

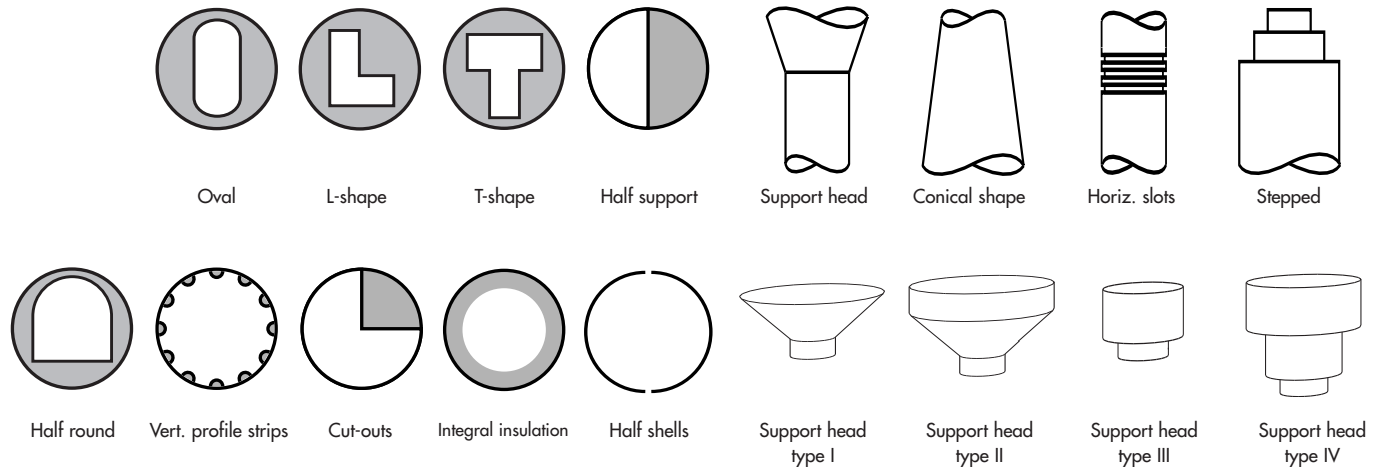
The particular attraction: special shapes

To satisfy even the most unusual wishes of your clients

Only a few examples of the inner formers of the RAPIDOBAT® shuttering tube can be shown here.

The special shape options are virtually unlimited.

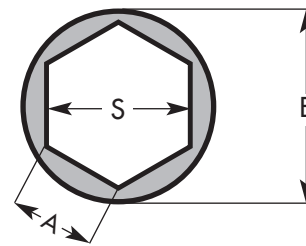
And of course you can also obtain the matching support plinths and support heads from us.



Shapes: RAPIDOBAT® shuttering tubes are available in many versions for hexagonal and octagonal supports.

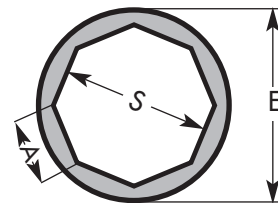
Hexagonal supports

Item number	Corner dim. E (mm)	Spanner size S (mm)	Face length A (mm)	Weight kg/m	Concrete requir. m³/m
60320000	200	173	100	2,70	0,026
60330000	300	260	148	4,70	0,057
60340000	400	335	198	6,50	0,102
60360000	600	530	298	11,90	0,231
60380000	800	670	398	12,60	0,412



Octagonal supports

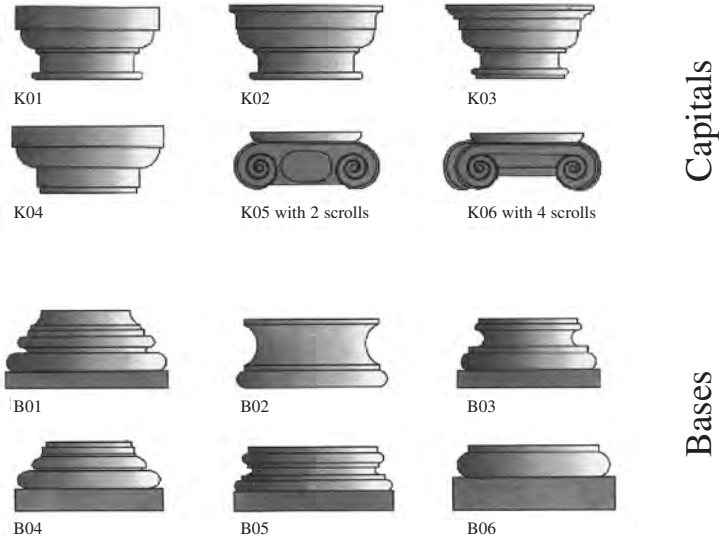
Item number	Corner dim. E (mm)	Spanner size S (mm)	Face length A (mm)	Weight kg/m	Concrete requir. m³/m
60425000	250	231	96	3,50	0,044
60428000	280	259	107	4,20	0,055
60430000	300	277	115	4,60	0,064
60435000	350	323	134	5,40	0,087
60440000	400	370	153	6,30	0,113
60460000	600	554	229	11,40	0,253
60480000	800	739	306	21,80	0,452



RAPIDOBAT®

More than just squaring the circle

Capitals and bases.
The modern antiquities.



Textures

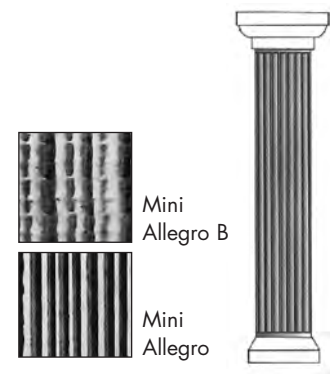
RAPIDOBAT®-Special shuttering tubes can be supplied with various textured inserts for supports with different diameters. Impressive to touch and visually excellent.

RAPIDOBAT® Texture type A

Item number	Diameter mm	Weight kg/m	Length supplied
64025000	250	3,36	On request
64030000	300	4,02	On request
64035000	350	4,68	On request
64040000	400	5,34	On request
64045000	450	6,00	On request
64050000	500	8,35	On request
64056000	560	9,33	On request
64060000	600	10,00	On request

Texture type A

Mini Allegro B • Mini Allegro

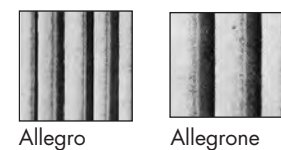


RAPIDOBAT® Texture type B

Item number	Diameter mm	Weight kg/m	Length supplied
64140000	400	5,34	On request
64145000	450	6,00	On request
64150000	500	8,35	On request
64156000	560	9,33	On request
64160000	600	10,00	On request

Texture type B

Allegro • Allegrone



RAPIDOBAT® - Erection

Erect • Concrete • Pull the rip cord • Finished

Application information

Storage:

RAPIDOBAT® shuttering tubes should always be stored in a standing position and in a dry place before use. They must be protected against moisture in the air and soil.

Erection:

RAPIDOBAT® shuttering tubes must be erected with the **direction of the arrow pointing upwards**.

Bottom fixing:



The bottom fixing for the shuttering tube can simply be made from a wooden frame (cut-out template if necessary), which firmly clamps the outside of the tube.

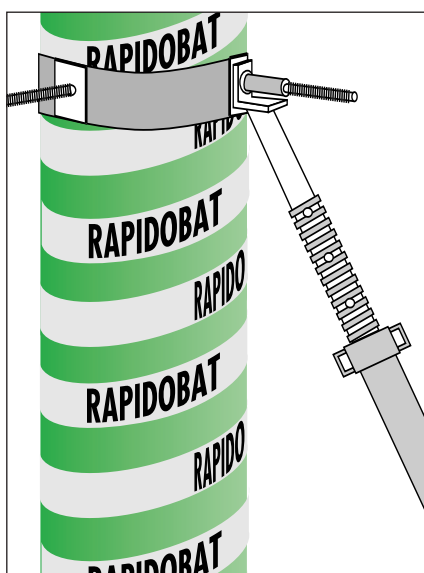
For larger diameters of shuttering, it is recommended that a wooden frame plinth about 10 cm high be provided for the shuttering tube.

The RAPIDO-FIX fixing has been developed especially for RAPIDOBAT® Square and RAPIDOBAT® Rectangular. Simple, practical and good.

* (see Accessories on Page 4)

It's that easy

Top fixing:



The type M SUPPORT HOLDER has been developed especially for RAPIDOBAT® shuttering tubes and ensures reliable stability when concreting.

The infinitely adjustable metal sleeve can be clamped firmly to the shuttering tube using the integral screw. The angled supports are now fitted and the shuttering tube aligned vertically. As an alternative to the Type M holder, we also offer types P and R*, which can also be fitted very quickly.

Concreting:

Up to 4 m shuttering height using a conveyor bucket at normal casting speed. For shuttering heights greater than 4 m, introduce the concrete by means of a concrete pump hose.

Sealing:

As a result of the wall thickness, the RAPIDOBAT® shuttering tube is designed to withstand all vibrations and loads encountered with conventional shuttering.

Note: Do not vibrate from the outside!

Tips from professionals for professionals

Removing the shuttering:

The rip cord incorporated into the shuttering tube works like a zip fastener.

It couldn't be any quicker.



Fasten the rip cord to the handle of a hammer for example – pull from top to bottom.

The „zip“ is undone.



Open up and remove the RAPIDOBAT® shuttering tube. It can also be left around the column as protection. As the RAPIDOBAT® shuttering tube is wound from paper, there is no problem with disposal. Paper is an environmentally friendly raw material.

RAPIDOBAT®

Requirement specification

Service area:
013 Concrete and reinforced concrete work

Area of application: DIN 276
 ■ Supporting structures
 ■ Supports and columns

RAPIDOBAT® Shuttering for reinforced concrete supports

- 01 Reinforced concrete supports
- Included in the construction are
- 02 Concrete B / Extra
- 03 Concrete additive
- 04 Shuttering type (**Manufacturer: H-BAU Technik Horstmann GmbH**)
- 05 m Rapidobat Spiral
- 06 m Rapidobat Smooth (visual concrete quality)
- 07 m Rapidobat Texture type
- 08 m Rapidobat Square
- 09 m Rapidobat Rectangular
- 10 m Rapidobat Hexagonal
- 11 m Rapidobat Octagonal
- 12 Diameter Ø mm
- 13 Dimensions L x W = mm x mm
- 14 Individual lengths from m to m
- 15 m special manufacture according to Drawing No.
- 16 Reinforcement will be paid separately
- 17 Supply
- 18 Supply, erect shuttering and concrete
- 19 Erect shuttering and concrete only. Supplied on site.
- 20 Installation in accordance with information from **H-BAU Technik GmbH**
Am Güterbahnhof 20
79771 Klettgau-Erzingen
Tel.: 0 77 42 / 92 15-20

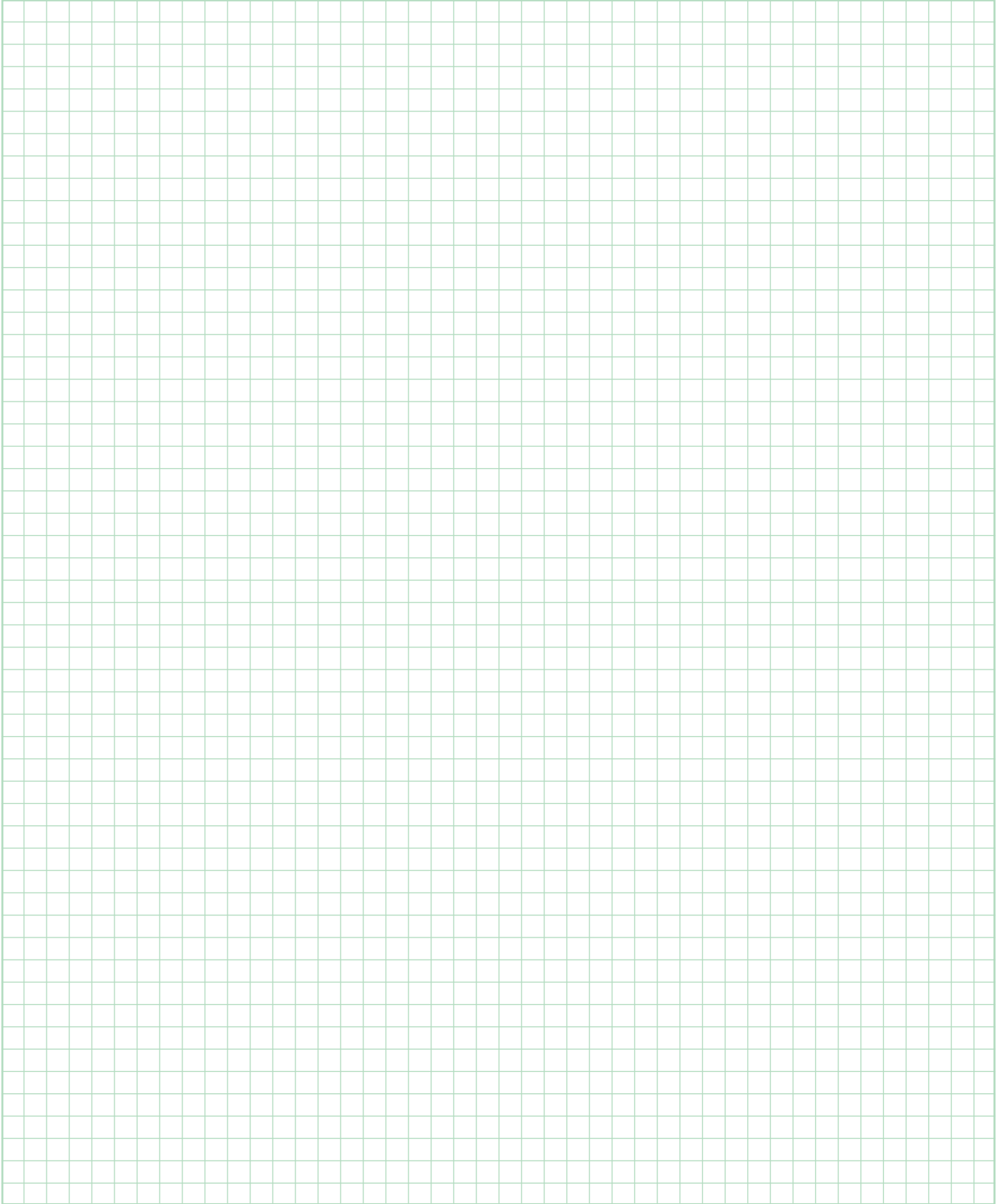
The instructions for use must be observed.

21	Material	
22	Labour	
23	Individual price	
24		Total price



SHUTTERING

Notes



RAPIDOBORD® WM

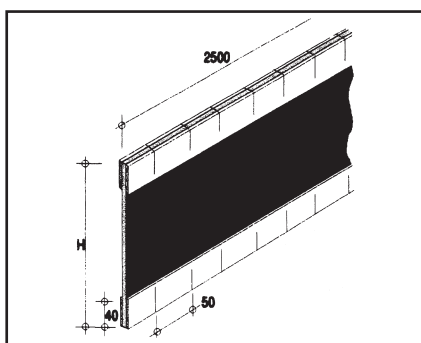
Face shuttering for continuous mat reinforcement

Obvious advantages

- **The grid system**
with 5 cm pitch adapts to all reinforcing mats without any problems.
- **Rapid shuttering**
with continuous mat reinforcement
- **Easy removal of shuttering**
is guaranteed due to the special surface. RAPIDOBORD WM can be easily detached.
- **Flexible**
RAPIDOBORD WM adapts flexibly to the radius of the given shape when fitting shuttering.
- **Excellent bond**
to new concrete is achieved by the exposed aggregate concrete effect. RAPIDOBORD WM produces a rough surface.
- **Environmental friendliness**
is taken for granted. RAPIDOBORD WM contains no additives harmful to the environment and can thus be disposed of without any problems.

Polished technology

RAPIDORD WM is the ideal face shuttering for all mat-reinforced concrete elements. The slot grid with a pitch of 5 cm guarantees that RAPIDOBORD WM can be fitted quickly and without any problems.



When fitting shuttering in a radius, RAPIDOBORD WM matches itself easily to the given shape. RAPIDOBORD WM produces a rough surface - a kind of exposed aggregate concrete effect - which gives an excellent bond to new concrete.

Tips from professionals for professionals

For recesses in ceilings and wall areas, any required lengths and shapes can be created using a wood saw.

It is not necessary to apply a delaying medium. RAPIDOBORD WM contains a surface activation medium. The removal of the shuttering and washing out of the elements should take place within 24 hours. The best results are achieved in this short time.

It is particularly efficient if the elements are washed out with a high pressure cleaner immediately after removing the shuttering. Brushing down and subsequent washing is also possible.

Natural constituents of the Rapido-bord act to delay hardening.

RAPIDOBORD®

Dimensions and ordering information

Item No.	Type	Height H in mm	Length L in mm	Weight kg/m	Packing unit m
23325020	WM 20	200	2500	1,00	25
23325025	WM 25	250	2500	1,25	25
23325030	WM 30	300	2500	1,50	25
23325035	WM 35	350	2500	1,75	25
23325040	WM 40	400	2500	2,00	25
23325045	WM 45	450	2500	2,25	25
23325050	WM 50	500	2500	2,50	25
23325055	WM 55	550	2500	2,75	25
23325060	WM 60	600	2500	1,60	25

Other dimensions on request.



RAPIDOBORD®

Requirement specification

Service area:
013 Concrete and reinforced concrete work

Area of application: DIN 276
 ■ Supporting structures
 ■ Shuttering

RAPIDOBORD® face shuttering for working joints, shrinkage passages etc.

- 01 Addition for shuttering of working joints, shrinkage passages etc.
Included in the construction are
- 02 Shuttering type (**Manufacturer: H-BAU Technik Horstmann GmbH**)
- 03 m Rapidobord type W for rod-reinforced components
- 04 m Rapidobord type WM for mat-reinforced components
- 05 m Rapidobord type F for rod-reinforced components (no hardening delay)ung)
- 06 Height mm
- 07 The removal of the shuttering and processing (washing out) of the surface within 24 h is to be included in the price
- 08 Reinforcement will be paid separately
- 09 Supply
- 10 Supply, erect shuttering and concrete
- 11 Erect shuttering and concrete only. Supplied on site.
- 12 Installation in accordance with information from

H-BAU Technik GmbH
Am Güterbahnhof 20
79771 Klettgau-Erzingen
Tel.: 0 77 42 / 92 15-20

The instructions for use must be observed.

13	Material	
14	Labour	
15	Individual price	
16		Total price



UNIBORD

The ceiling edge shuttering with the perfect grip

Impressive advantages

- Rapid and cost-effective construction of a ceiling edge shuttering
- Tongue and groove system at the ends
- Easy erection of the shuttering elements by setting with WABO foam
- High shape stability due to EPS - SE 120
- Thermal conductivity $\lambda = 0,031 \text{ [W/(m}\cdot\text{K)]}$
- Absolutely no requirement for expensive shuttering and the removal of shuttering
- Ideal element for all shuttering

Dimensions

Length: 1200 mm
 Height: 160 - 220 mm
 Foot width: 70 mm
 Insulation thickness: 20 mm

Material

EPS - SE 120 , combustion class B1

Thermal conductivity, calculated value according to DIN 4108

$\lambda = 0,031 \text{ [W/(m}\cdot\text{K)]}$

Compressive stress at 10% compression according to DIN 53421

$\sigma_D = 0,9 - 1,30 \text{ N/mm}^2$

Bending strength

according to DIN 53423

$\sigma_B = 2,20 - 2,50 \text{ N/mm}^2$

UNIBORD type S

Item No.	Dimensions in mm	
	L	H
52016120	1200	160

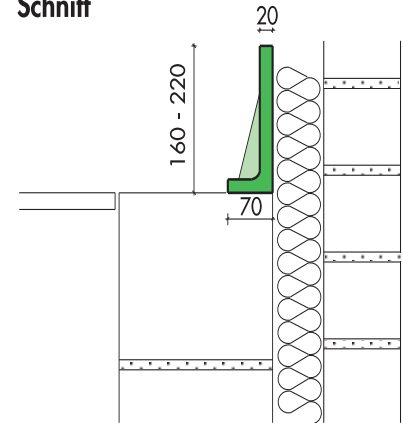
Tips for professionals from professionals

1. Apply WABO foam over the whole area of the slots provided in the UNIBORD foot.
2. Place the UNIBORD in the required position on the edge of the ceiling and secure against lifting off.
3. Proceed with the next UNIBORD elements as described in items 1 and 2.

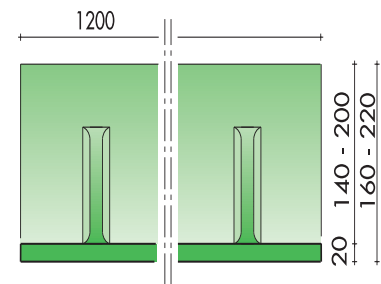
We recommend that the elements are secured against lifting off by placing bricks or similar on the element foot. These can be removed after 2 - 3 hours.

Item No.	Type	H in cm	L in cm	Weight kg/m	Packing unit m/Stk
520 16120	S 16	16	120	0,71	24/20
520 18120	S 18	18	120	0,77	24/20
520 20120	S 20	20	120	0,83	24/20
520 22120	S 22	22	120	0,89	24/20

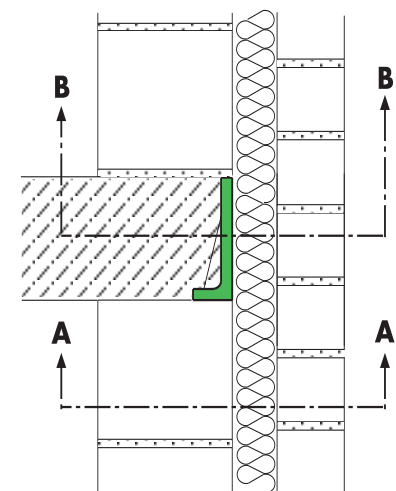
Schnitt



Ansicht



k-Werte



$k_{A-A} = 0,28 \text{ W/(m}^2 \cdot \text{K)}$

$k_{B-B} = 0,25 \text{ W/(m}^2 \cdot \text{K)}$

UNIBORD type F shuttering aid for FT-works on request

WARMBORD SE

The insulating shuttering for the warm house

Impressive advantages

- Shuttering and thermal insulation in one product
- High stability
- Easy and loss-free fabrication of the WARMBORD by shortening with a saw and further fabrication of the remaining pieces.
- Simple fitting of the elements through use of adhesive insulation or WABO foam.
- Absolutely no requirement for expensive shuttering and the removal of shuttering

Type SE

- Thermal conductivity
 $\lambda = 0,038 \text{ [W/(m}\cdot\text{K)]}$
- Exterior with and without plaster base coating
- Tongue and groove system

WARMBORD type SE

Dimensions:

Length:	1000 mm
Height:	160 - 250 mm
Foot width:	95 mm
Thickness:	50 mm
Tongue and groove system	

Material:

Polystyrene foam

WARMBORD type SE

Item No.	Type	H in cm	L in cm	Weight kg/m	Packing unit m
535 16100	SE 16	16	100	0,27	50,0
535 18100	SE 18	18	100	0,31	42,0
535 20100	SE 20	20	100	0,34	40,0
535 22100	SE 22	22	100	0,35	30,0
535 24100	SE 24	24	100	0,36	25,0
535 25100	SE 25	25	100	0,37	25,0
Can also be supplied with support coating (see price list)					

Tips for professionals from professionals

For the erection, we recommend ADHESIVE INSULATION or our WABO foam. MG III can also be used for brickwork. Start with an outside corner. If you have not ordered any corner elements, saw carefully at 45° and butt together.

Next, add internal mortar or foam wedges to seal.

Cut to length with a saw. As WARMBORD type SE is fitted with a tongue and groove system, as few elements as possible should be shortened.

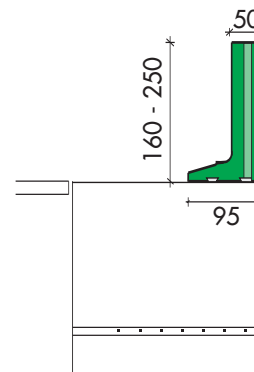
1. Fabrication with WABO foam

- a) Apply WABO foam over the whole area of the slots provided in the WARMBORD foot.
- b) Place the WARMBORD in the required position on the edge of the ceiling and secure against lifting off.
- c) Proceed with the next WARMBORD elements as described in items a) and b).
- d) Seal open joints with WABO foam.

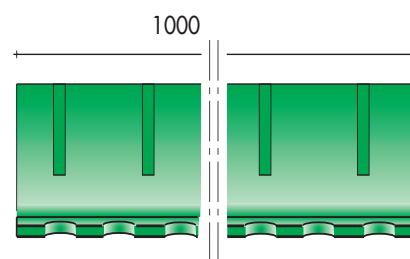
2. Fabrication with adhesive insulation

- a) Apply ADHESIVE INSULATION in lines in the area of the slots.

Section



View



- b) Press WARMBORD onto the required position on the edge of the ceiling and fill all claw slots completely.
- c) Proceed with the next WARMBORD elements as described in items a) and b).
- d) Seal open joints with WABO foam

3. Fabrication with MG III

Fabricate as described in item 2. With WABO foam, the waiting time before concreting is about 3 hours and with ADHESIVE INSULATION about 24 hours.

Thermal insulation::

WARMBORD elements are tested. A report is available on request.

SCHALBORD

High stability with minimum footprint

Impressive advantages

- Rapid and cost-effective construction of a ceiling edge shuttering
- High stability with minimum footprint
- Easy and loss-free fabrication of the SCHALBORD by shortening with a saw and further fabrication of the remaining pieces.
- High compressive strength due to cement/wood-fibre sheets
- Simple fitting of the elements by setting with WABO foam.
- Absolutely no requirement for expensive shuttering and the removal of shuttering
- Shuttering element for all formwork

Tips for professionals from professionals

1. Apply WABO foam over the whole area of the slots provided in the SCHALBORD foot.
2. Place the SCHALBORD in the required position on the edge of the ceiling and secure against lifting off.
3. Proceed with the next SCHALBORD elements as described in items 1 and 2.

We recommend that the elements are secured against lifting off by placing bricks or similar on the element foot. These can be removed after 2 - 3 hours.

Dimensions:

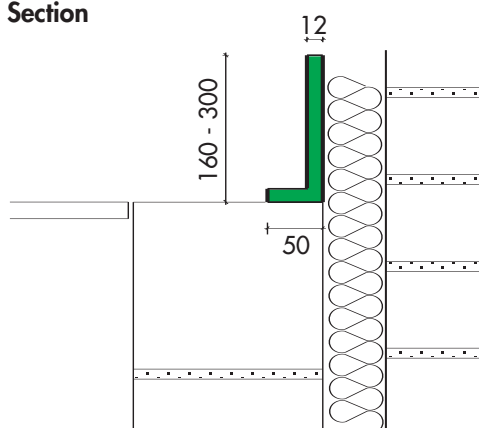
Length: 2500 mm
Height: 160 - 300 mm
Foot width: 50 mm
Thickness: 12 mm

Material:

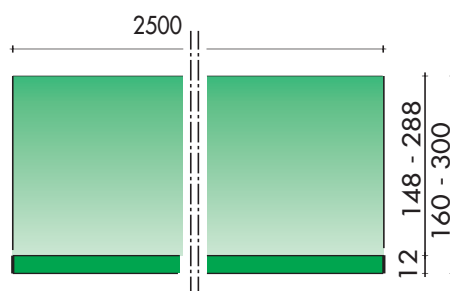
Cement-bonded wood fibre sheet

Item No.	Type	H in cm	L in cm	Weight kg/m	Packing unit m
525 16260	AB 16	16	250	3,60	249,6
525 18260	AB 18	18	250	3,90	249,6
525 20260	AB 20	20	250	4,20	249,6
525 22260	AB 22	22	250	4,50	249,6
525 24260	AB 24	24	250	4,80	249,6
525 26260	AB 26	26	250	5,10	249,6
525 30260	AB 30	30	250	5,70	249,6

Section



View



UNIBORD

Requirement specification

Service area :
013 Concrete and reinforced concrete work

Area of application:
■ Ceiling constructions

UNIBORD Edge shuttering for concrete constructions

01 Edge shuttering of the concrete construction by means of **UNIBORD** from the company
H-BAU Technik Horstmann GmbH

02 The following are to be used in the installation in the area of the ceiling edges

03 m **UNIBORD** type S L= 1,20 m

04 Height H=.....cm

05 installation in the area of

06 the ceiling edge

07 the floor slab

08

09 Supply

10 Supply and install

11 Installation only. Supplied on site.

12 Installation in accordance with information from

H-BAU Technik GmbH
Am Güterbahnhof 20
79771 Klettgau-Erzingen
Tel.: 0 77 42 / 92 15-20

Fabrication tips in SHUTTERING ELEMENTS information leaflet must be observed.

13 Material

14 Labour

15 Individual price

16 Total price



WARMBORD

Requirement specification

Service area :
013 Concrete and reinforced concrete work

Area of application: DIN 276
■ **Storey ceilings, roof ceilings and constructions**

WARMBORD® Shuttering and insulation in the area of ceiling edges

- 01 Shutter ceiling edges and insulate in accordance with WSchVO '95
- 02 The following are to be used in the installation in the area of the ceiling edges
- 03 m Warmbord typ SE without support coating
- 04 m Warmbord typ SE with support coating
- 05 The following are to be used in the installation in the area of ceilings with roller shutter boxes
- 06 m Warmbord typ SE -Rollo without support coating
- 07 m Warmbord typ SE -Rollo with support coating
- 08 Supply
- 09 Supply and install
- 10 Installation only. Supplied on site.
- 11 Installation in accordance with information from

H-BAU Technik GmbH
Am Güterbahnhof 20
79771 Klettgau-Erzingen
Tel.: 0 77 42 / 92 15-20

Fabrication tips in WARMBORD information leaflet must be observed.
Elements are to be set on the crown of the wall using adhesive insulation or Wabo pistol foam.

12	Material	
13	Labour	
14	Individual price	
15		Total price



SCHALBORD

Requirement specification

Service area :
013 Concrete and reinforced concrete work

Area of application: DIN 276
■ Ceiling constructions

SCHALBORD Edge shuttering for concrete constructions

- 01 Edge shuttering of the concrete construction by means of **SCHALBORD** from the company **H-BAU Technik Horstmann GmbH**
- 02 Included in the construction are
- 03 m **SCHALBORD** L=2,50 m
- 04 Height H=.....cm
- 05 installation in the area of
- 06 the ceiling edge
- 07 the floor slab
- 08
- 09 Supply
- 10 Supply and install
- 11 Installation only. Supplied on site.
- 12 Installation in accordance with information from

H-BAU Technik GmbH
Am Güterbahnhof 20
79771 Klettgau-Erzingen
Tel.: 0 77 42 / 92 15-20

Fabrication tips in **SCHALBORD** information leaflet must be observed.
Elements can be set using adhesive insulation or assembly foam.

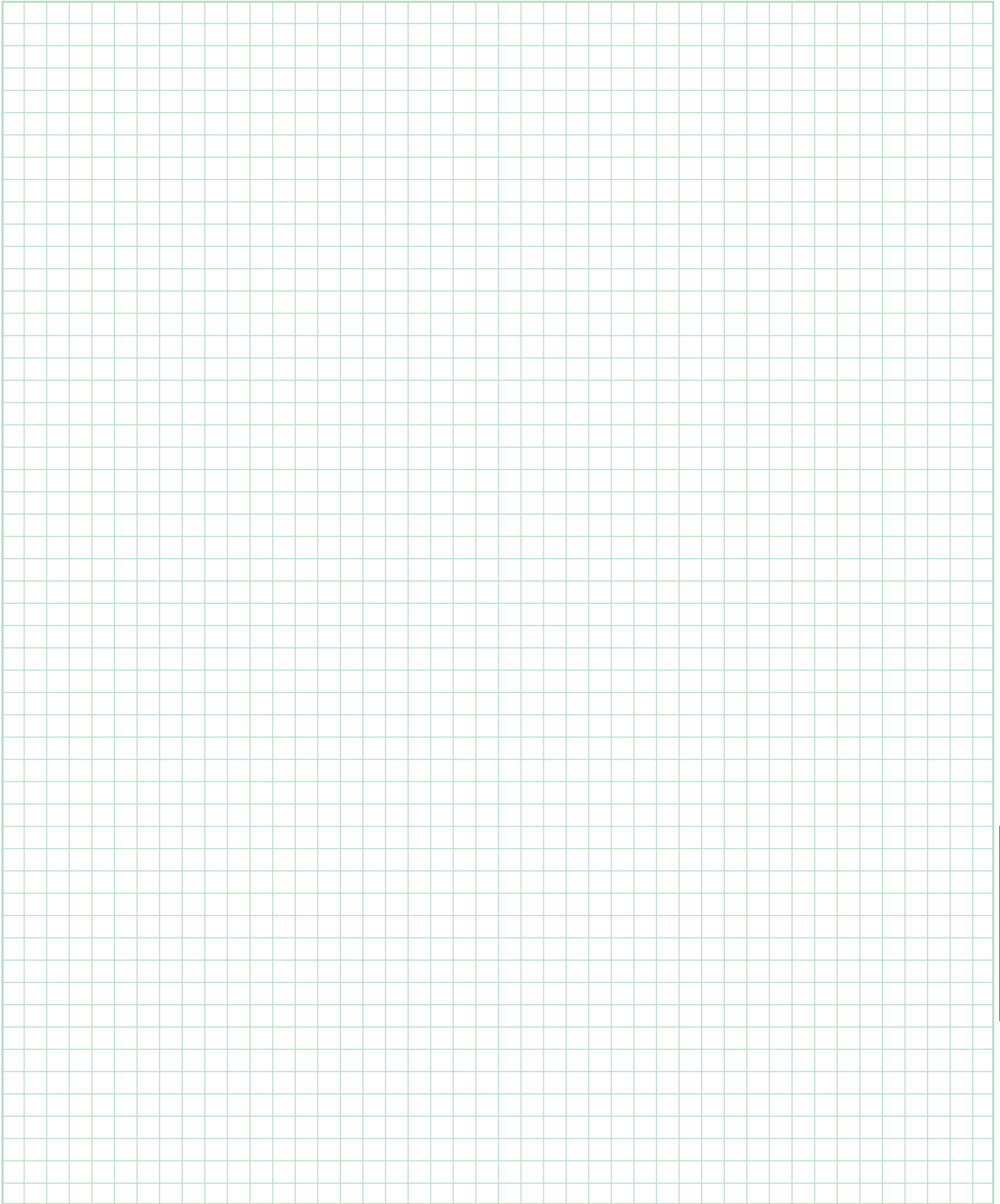
- 13 Material
- 14 Labour
- 15 Individual price
- 16 Total price



SHUTTERING

Notes

Keeps
in great
shape



REQUIREMENT
SPECIFICATION TEXTS



BOXFER[®]	Reinforcement connections
ISOPRO[®]	Cantilever slab connections
JSD / HED	Shear pins
SCHALL-ISOSTEP	Footstep noise elements
SCHALL-ISOTRITT	Footstep noise mounting elements
SCHALL-ISOBBOX	Footstep noise boxes
SCHALL-ISODORN	Footstep noise pins
FERBOX[®]	Reinforcement connections
GRIPRIP[®]	Masonry connections
RIPINOX[®]	Ribbed stainless steel concrete reinforcement
FERNOX	Ribbed stainless steel concrete reinforcement
PENTAFLEX[®]	Working joint seals
RAPIDOBAT[®]	Shuttering tubes
UNIBORD[®]	Shuttering
RAPIDOBORD[®]	Shuttering
WARMBORD[®]	Insulated shuttering
PRO BETON	Spacers